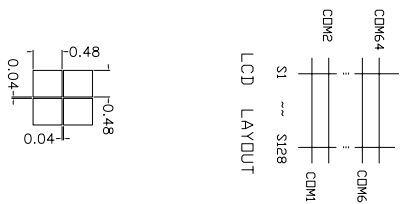
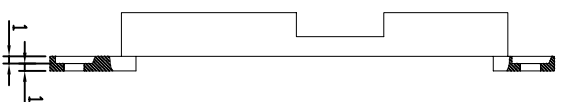
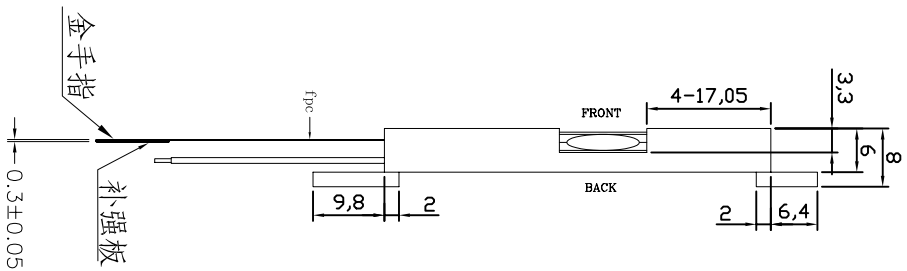
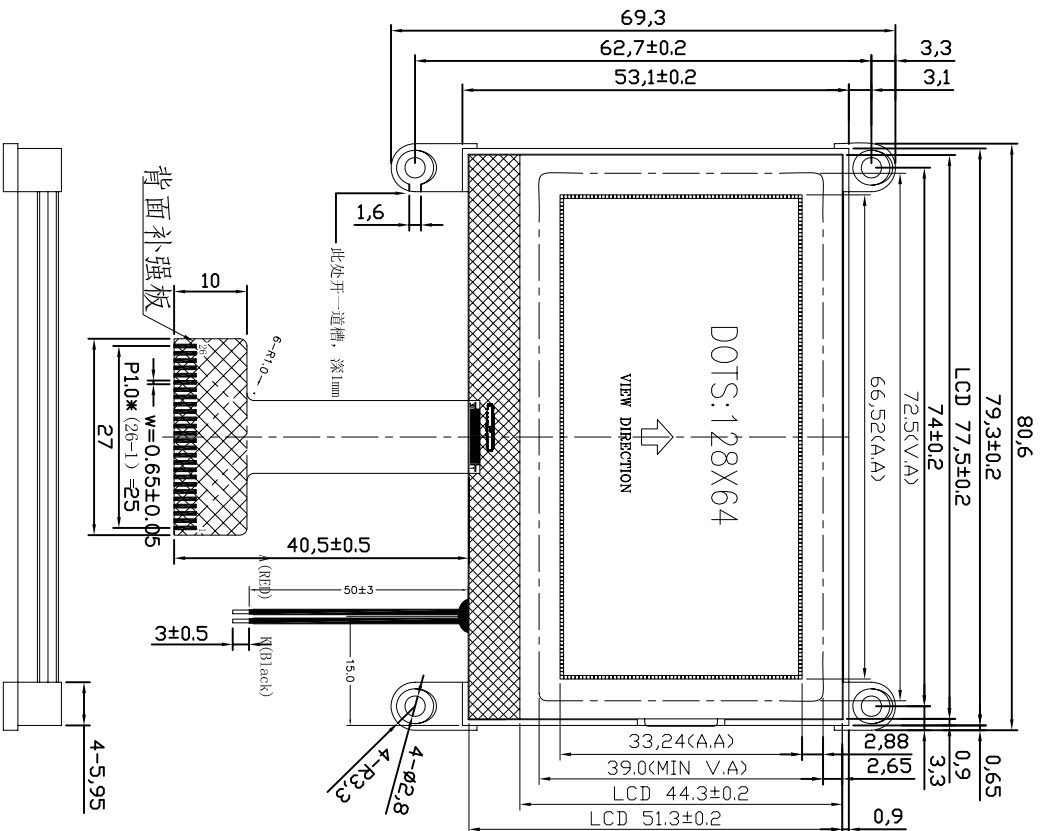
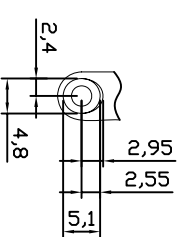


SYM	REV	DESCRIPTION	DATE
01	First issue		03-30-2012
02	FPC加长		May-15-2012
03	背光引线去掉插头改焊接式		Jun-18-2012
04	FPC焊接式改为直插式		Oct-13-2012
05	FPC金手指宽度改0.65mm		Oct-16-2012
06	修改背光挡墙		Feb-27-2013



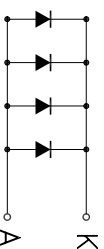
PIN	DESC	PIN	DESC
1	NC	14	D7
2	CS0	15	BM0
3	RST	16	BM1
4	CD	17	ID
5	WR0	18	VDD
6	WR1	19	VSS
7	D0	20	TEST4
8	D1	21	VB1+
9	D2	22	VB1-
10	D3	23	VB0-
11	D4	24	VB0+
12	D5	25	VLCD
13	D6	26	NC




NOTES:

1. DISPLAY TYPE: STN/Yellow-Green/POSITIVE
2. OPERATING VOLTAGE: VDD=3.3V, Vlcd=9.0V
3. OPERATING TEMPERATURE: -10°C~60°C
4. STORAGE TEMPERATURE: -20°C~70°C
5. DRIVE MODE: 1/64D, 1/9B
6. VIEWING DIRECTION: 6:00
7. POLARIZER TYPE: TRANSMISSIVE
8. CONNECTOR: COG/UC1601S
9. CUSTOMER No.:

Backlight circuit:



COLOR : 4pcs Yellow-Green LED
VF=3.1V±0.2V, If=60mA



深圳市三元晶科技有限公司
ShenZhen TCC LCD Hi-Tech Co., Ltd.

DRAWING NO.	SYG12864PV20-3C32YIL3-B1W2	GENERAL TOL:	±0.2
APPROVED BY	CHECKED BY	DRAWING BY	UNIT: mm
		JANY	PAGE
		2013/06/17	1/1