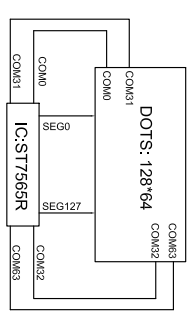
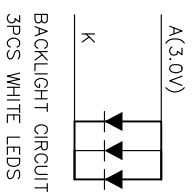
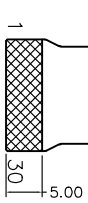
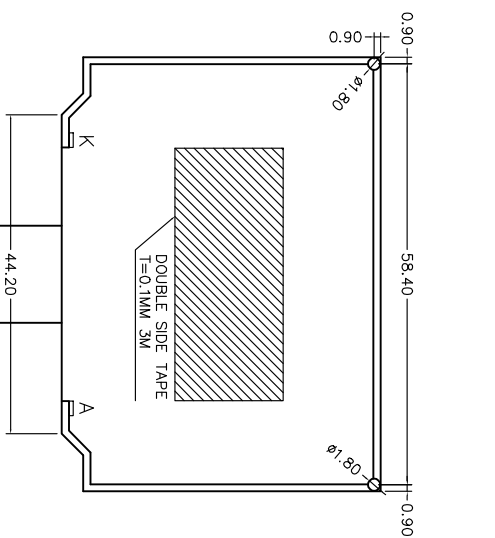
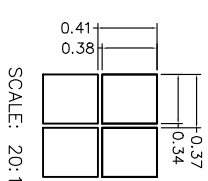
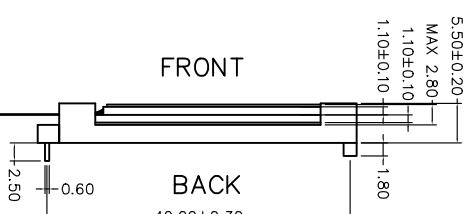
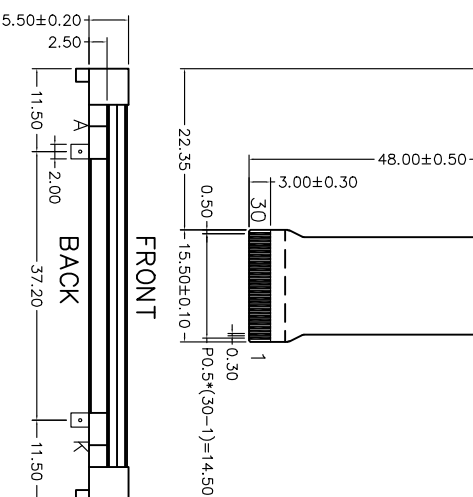
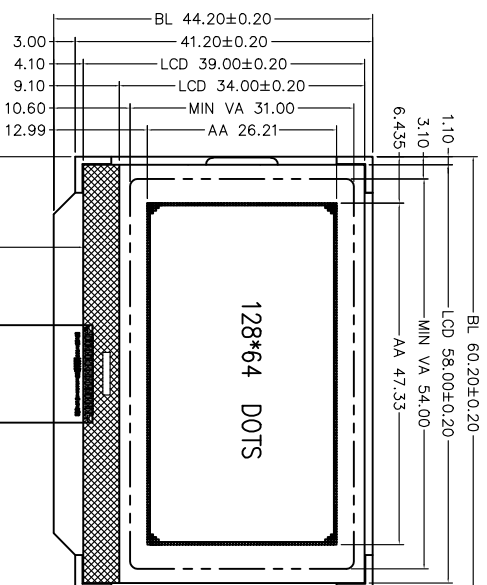


Customer approval :



LCD LAYOUT

PIN	SYMBOL	PIN	SYMBOL
1	NC	16	VSS
2	/CS1	17	VOUT
3	/RES	18	CAP3+
4	A0	19	CAP1-
5	/WR	20	CAP1+
6	/RD	21	CAP2+
7	DB0	22	CAP2-
8	DB1	23	V4
9	DB2	24	V3
10	DB3	25	V2
11	DB4	26	V1
12	DB5	27	V0
13	DB6	28	C86
14	DB7	29	P/S
15	VDD	30	NC

- Specifications:
1. Display Mode: FSTN/Transflective/Positive.
 2. Viewing Angle: 6 0'clock.
 3. Drive Method: 1/64 Duty, 1/9 Bias, Vop=9.0V, Vdd=3.0V.
 4. Top: -20°C~+70°C, Tst: -30°C~+80°C.
 5. Connector: COG+FP.C.
 6. Drive IC: ST7565R
 7. Backlight: 3PCS WHITE LEDs, If=60mA & Vf=3.0±0.10V
 8. With " * " Mark Dimensions Are Important Dimensions.

REV	REVISION RECORD	DATE	MODEL NO.	GENERAL TOL:
A	FIRST ISSUE	2015/11/03	模组型号	未注公差 ±0.3
B			APPROVED BY 审核	PAGE: OF 1
C			Francis	UNIT: mm
D			Liu	PROJECTION 三角法


深圳市三元晶科技有限公司
 ShenZhen TCCLCD HI-Tech Co., Ltd.